

Digitome Corporation Application Software

Program DtPersonalize: Digitome® Personalization Editor

Themes Page Theory of Operation

Author: Lionell K. Griffith - Digitome Corporation

06 March 2016

Any unauthorized disclosure, duplication, or use is a violation of civil and criminal law. This software product is owned by Digitome Corporation with all rights reserved except as indicated below.

Grant of Limited Rights: The user is hereby granted the right to use this software as provided by Digitome Corporation but is not to distribute, attempt to reverse engineer, nor to claim any degree of ownership or authorship. The software is provided as is and it is the sole responsibility of the user to accept any and all consequential damage caused by the use of the software and will hold Digitome Corporation and its agents harmless in the matter.

© Copyright 1998-2016 - Digitome Corporation

Digitome is a registered trademark of Digitome Corporation

Contents

Introduction.....	1
Themes Page.....	2
The Tabs.....	2
The Details.....	2
Select Theme Styles.....	2
Desktop Colors.....	2
Desktop Metrics.....	3
Install.....	4
Remove.....	4

Introduction

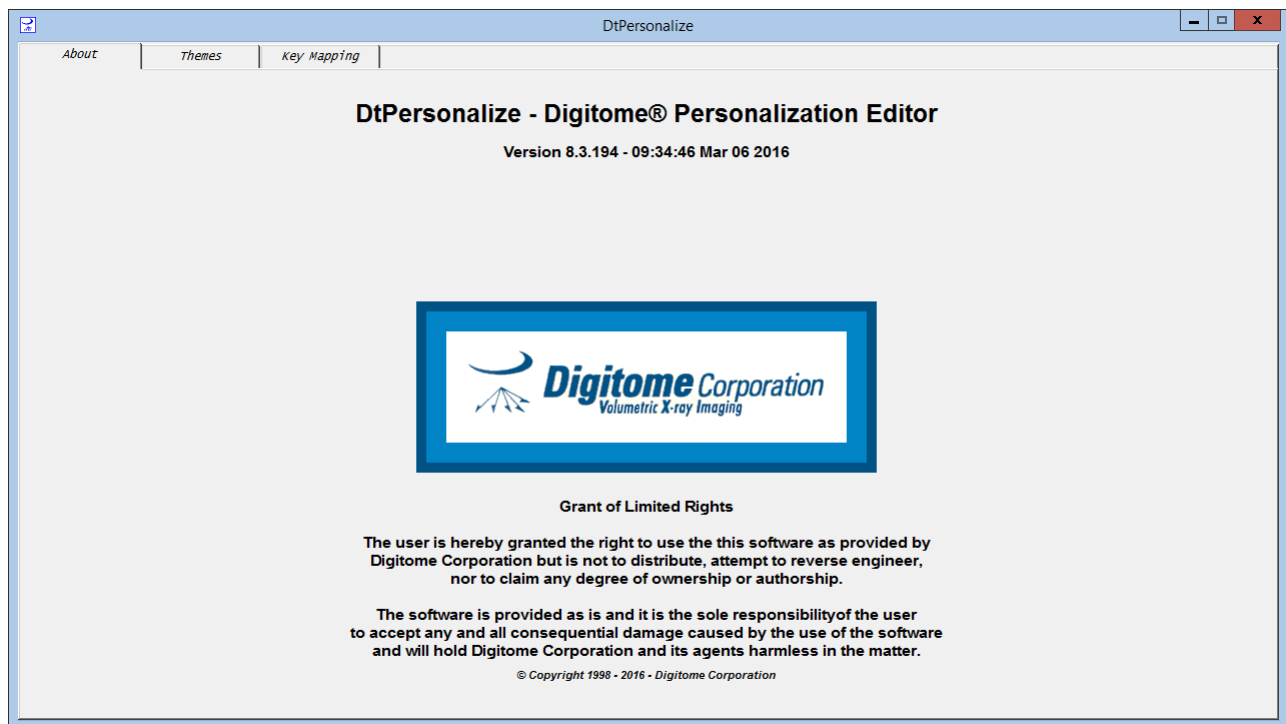
A Theory of Operation is a description of how a device or system should work. Its purpose is to give the user a mental model so that he will be better able to apply the device or system to specific problems. Such a mental model can assist the diagnosis of apparent and/or actual faulty behavior. A Theory of Operation is not intended to give the reader a full and detailed description of the internal structure and functionality of the device or system sufficient for its replication.

This program has a tabbed user interface with each tab implementing a major program task.

Tab Label	Task description
About	The initial splash screen indicating relevant program version, patents, and copyright
Themes	Supports the setting and testing of windows colors and metrics
Key Mapping	Supports the disabling of selected keyboard keys and Num Lock default state

One opens a tab to expose the associated user interface functionality by placing the mouse cursor over the tab and left clicking or touching it. Its controls can be operated either by touch or mouse. The resulting display is to be referred to as a page by the same name as the tab label (ie. Theme page).

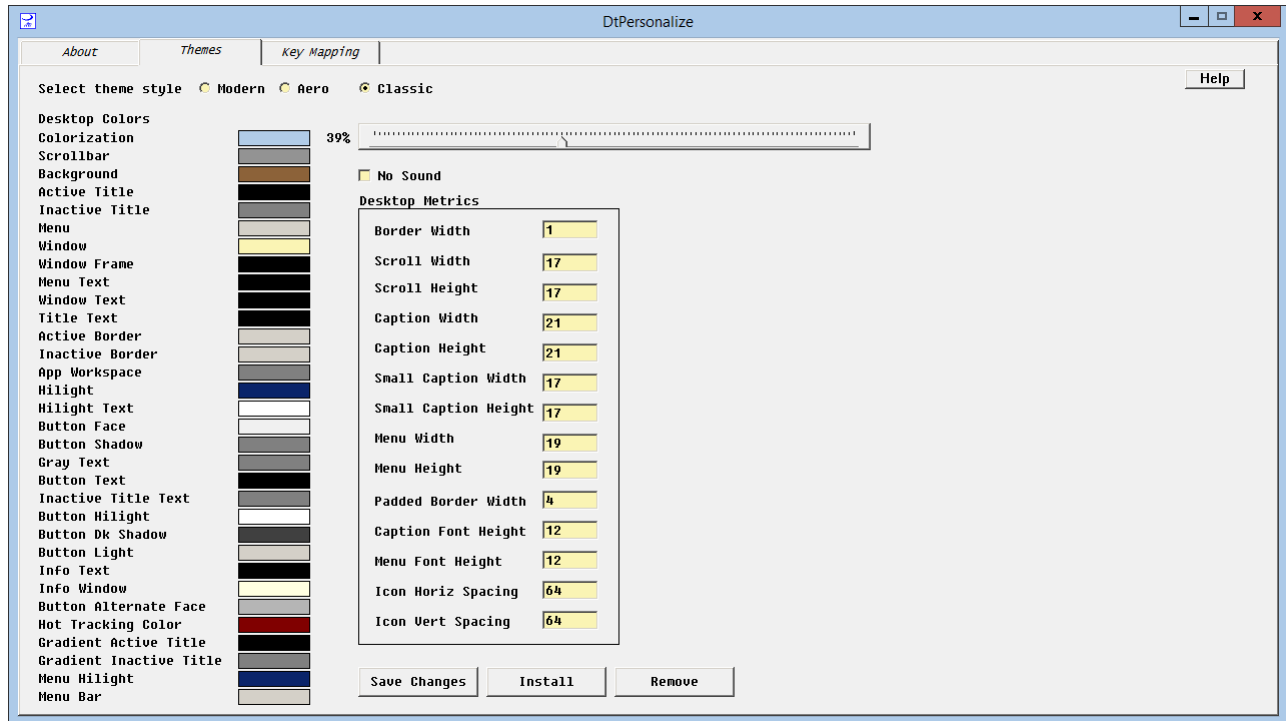
This document is focused on the Theory of Operation of the Themes page of program DtPersonalize.



Note: Digitome Corporation application software and documentation is protected by US Copyright law.

Note: Please refer to the **Grant of Limited Rights** statement on the title page of this document.

Themes Page



The Tabs

The tabs are as specified in the introduction. The Themes tab is in front with the other tabs to the back. This front and back relationship shows which page is being displayed at the moment.

The Details

The list of the Desktop colors and Window Desktop Metrics are adapted from the text of the Windows Theme Files. There are three theme templates with a few parameters have been preset so that the themes can approximate each of the three basic styles: Modern, Aero, and Classic. The templates will retain the last saved list of colors and metrics for each style. The templates are stored in a Themes folder in the program installation folder.

The controls support the setting and testing of the as modified and displayed Windows Desktop colors and metrics for the selected theme style.

Please note the Help button in the upper right corner of the Themes Page window.

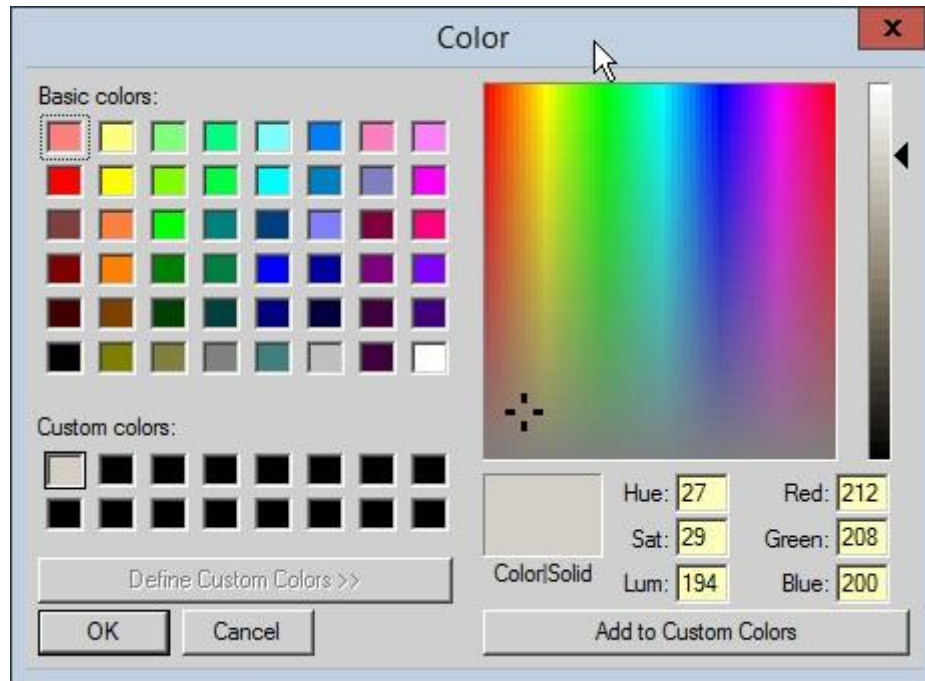
Select Theme Styles

Select one of the three theme style radio buttons for the desired theme style. The appropriate template will be loaded and its current colors and metrics will be displayed and made ready for editing.

Desktop Colors

Four colors have been preset for each theme style: Button Shadow, Button Highlight, Button Dk Shadow, and Menu Highlight. This allows each theme to simulate a 3D look or not as required by the specific theme style. Those color edit fields are protected from being edited by the program. However, the theme template, being simple text files, can be edited using a text editor. It is suggested that this not be done and only edit the colors permitted by this program.

To edit a color field, simply left click on the desired color swatch. A standard Color Selection Dialog will be displayed with that color already selected. Modify the color as desired and select OK to change the color or Cancel to discard your color modification.



The Colorization Color is a special case. The color selected for it and the percent setting of the index bar to its right will determine the color of active and inactive window caption bar and frame as well as the color of the Task Bar. The percent setting is the percent of the chosen color is to be added to a medium grey for the active window caption bar and frame. The Task Bar will be given the 100% color. It has the equivalent action as the intensity setting in the Personalization dialog of Windows.

For Windows 7 and 8.1, the Modern and Classic style, the task bar will be a solid color and for Aero the task bar will be transparent. For Windows 10 Aero task bar will also be a solid color.

No Sound Check Box

If the box is checked, the Windows System Sounds will be disabled. If it is checked, the Windows Default System Sounds will be enabled.

Desktop Metrics

The values in the edit fields are in pixels.

The Padded Border Width > 0 will add width and height to windows without changing the size of the client area while Border Width > 1 will subtract from the size of the client area.

For Windows 8.1, the Padded Border Width size is solid for all styles.

Save Changes

Any changes to the selected style will be saved in the appropriate template in the themes folder in the personalization installation folder. After which the Digithemes program will be terminated and the Personalization Dialog will be activated. Select the desired theme to view its appearance.

Personalization Folder Path: C:\Users\

Install

All three theme templates will be saved to the personalization theme folder. After which the Digithemes program will be terminated and the Personalization Dialog will be activated. Select the desired theme to view its appearance.

Personalization Folder Path: C:\Users\

Remove

Removes all three themes from the personalization theme folder.